



ANEMONA

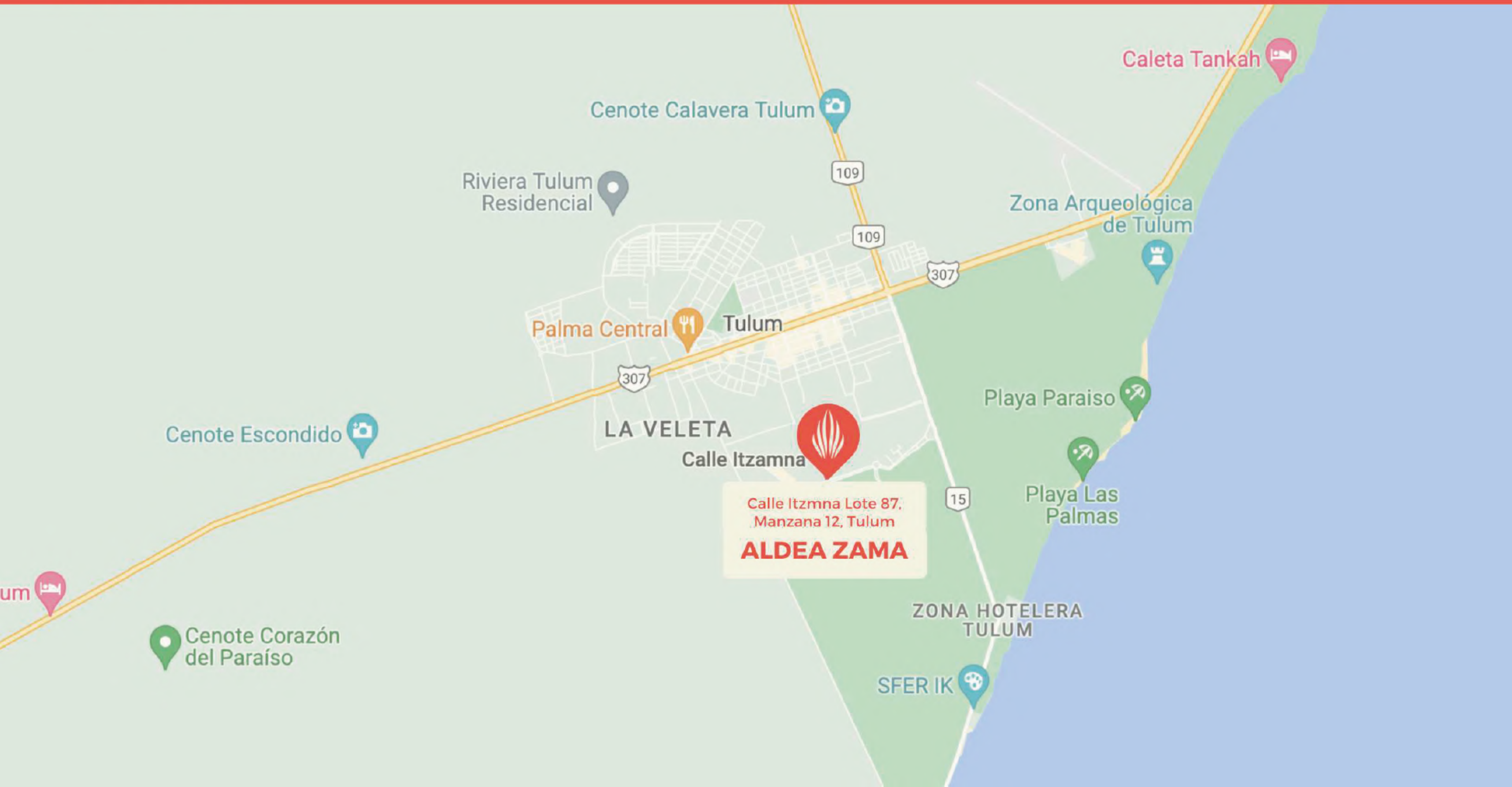
HUACHINANGO
CAPITAL

EDIFICIO COMERCIAL 3 NIVELES + ROOF TOP

Destinado a pequeños comercios y servicios en búsqueda de zonas de alta plusvalía y crecimiento dentro de un entorno acogedor y seguro.

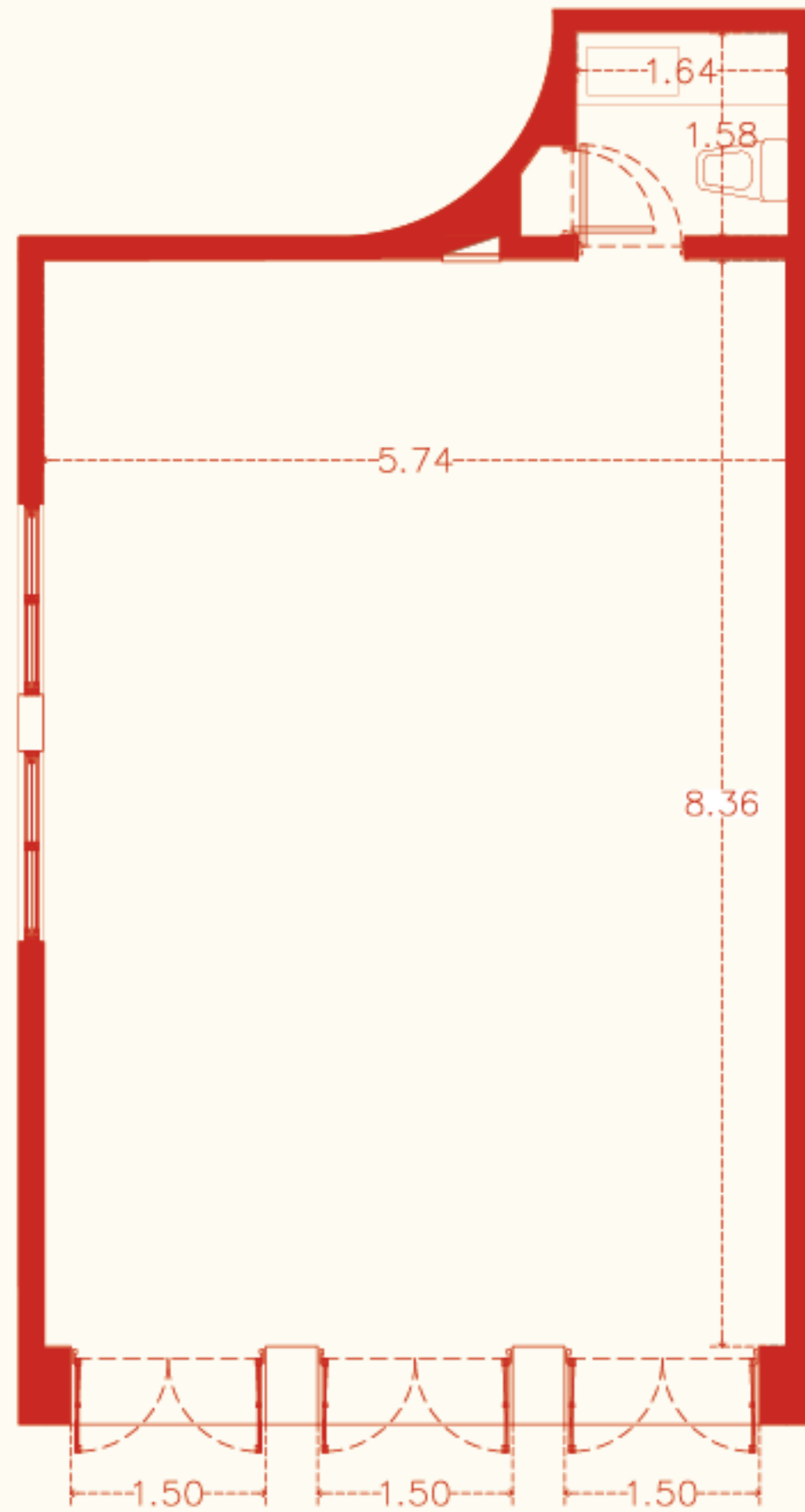


UBICACIÓN

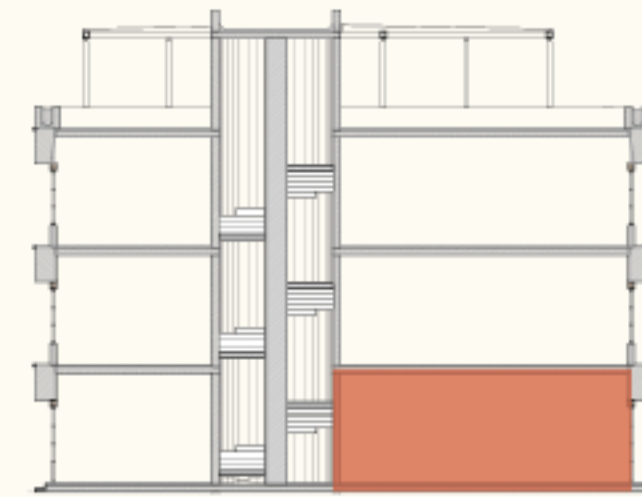


Calle Itzamna Lote 87,
Manzana 12, Tulum
ALDEA ZAMA

No.101 59.7 m²

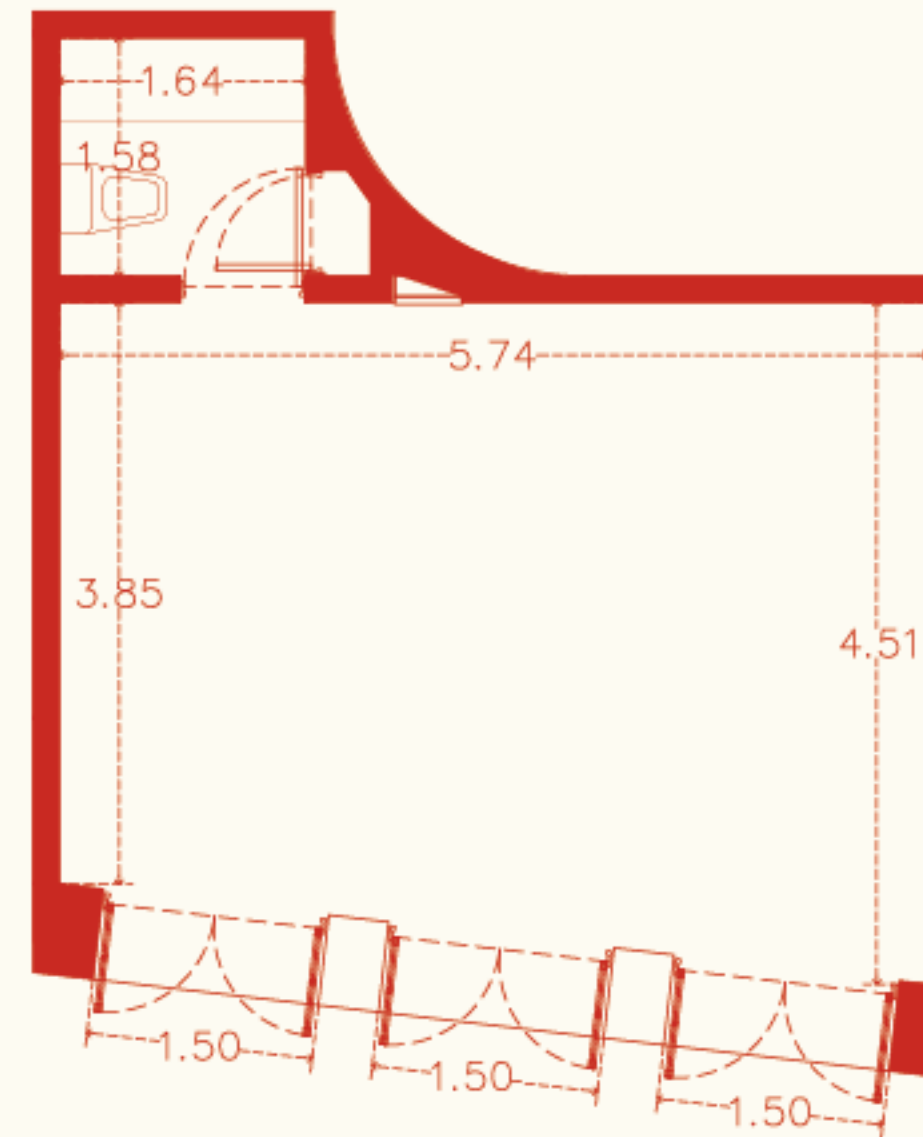


Frente Av. Principal

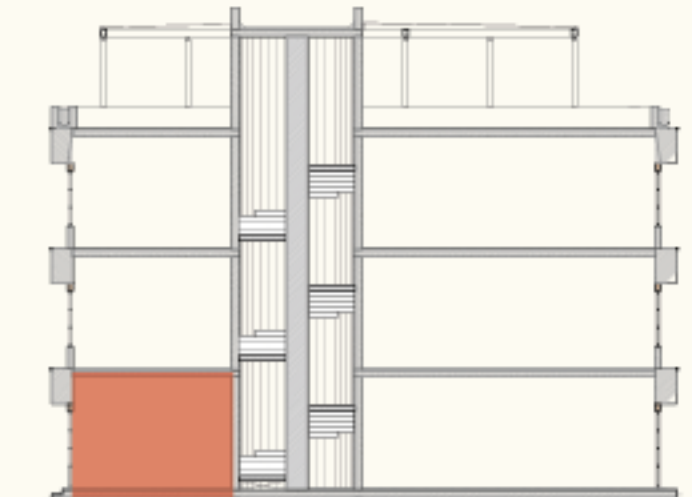


CORTE ESQUÉMÁTICO

No.102 34.2 m²



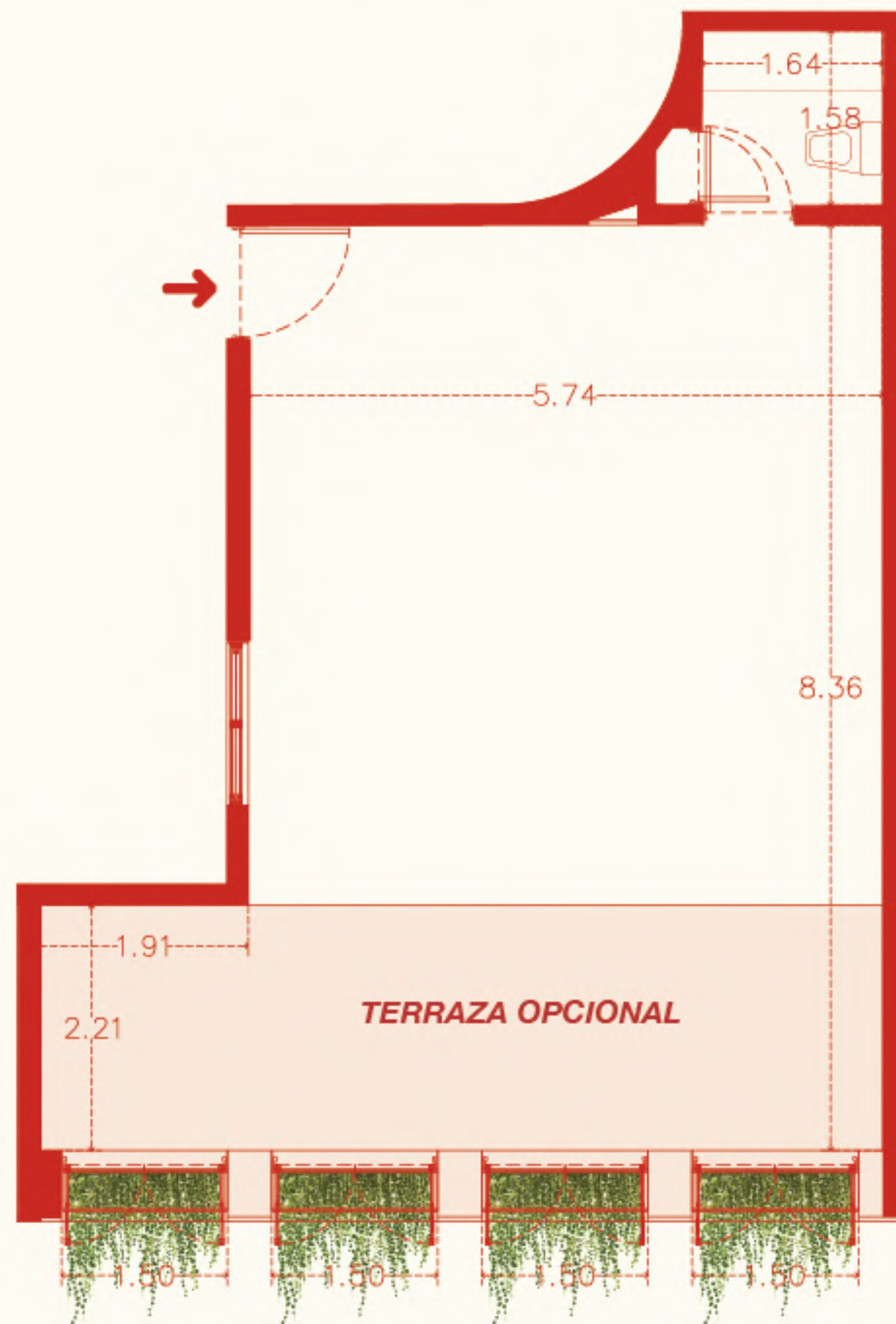
Frente Corredor
peatonal



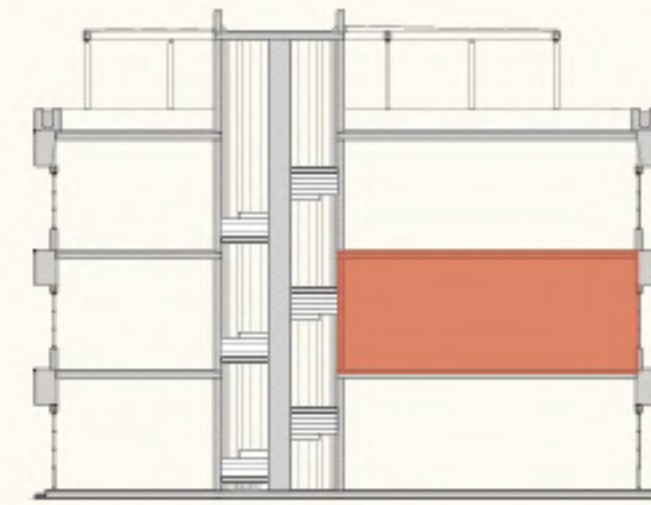
CORTE ESQUÉMÁTICO



No.201 65.4 m²

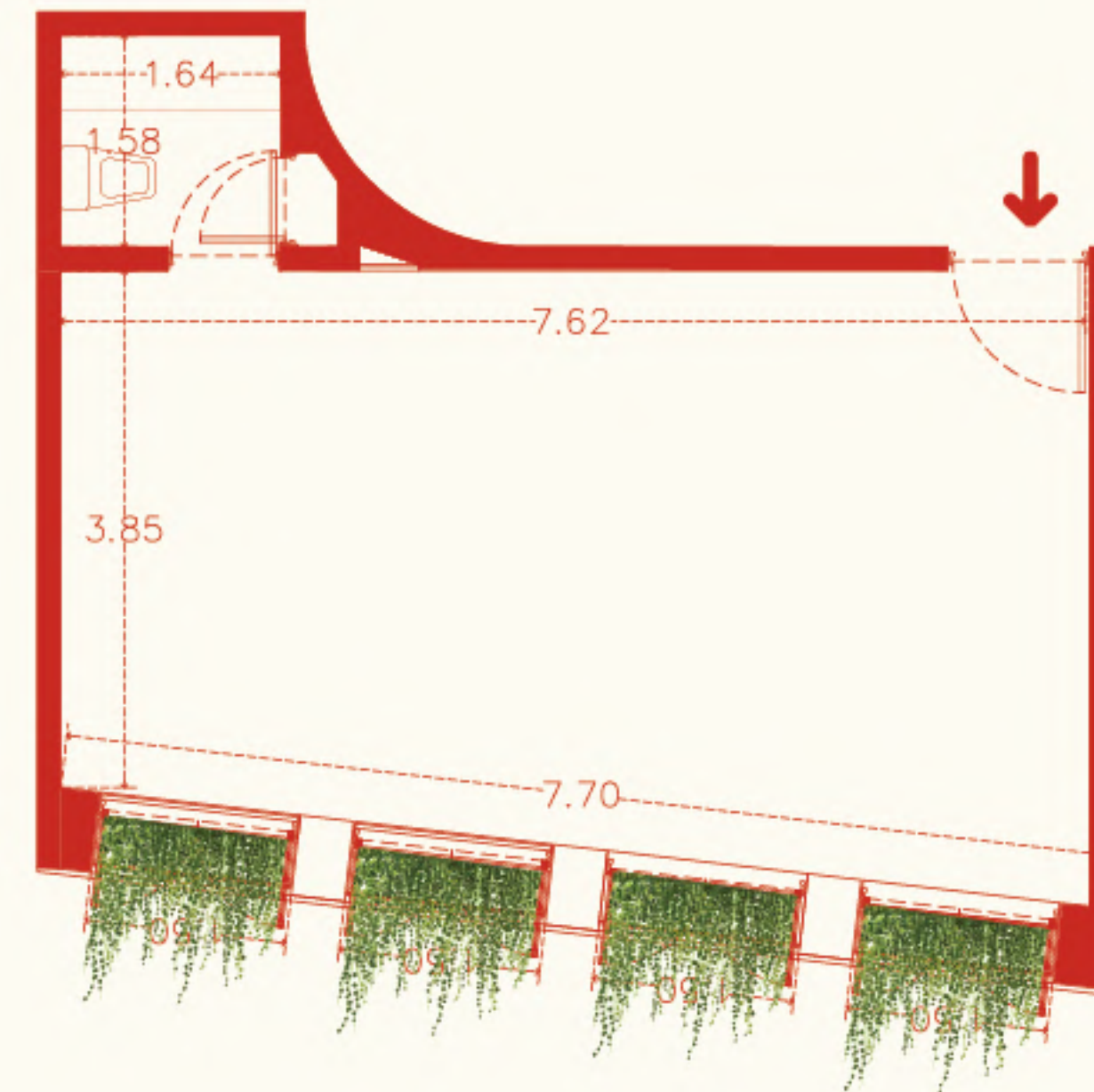


Frente Av. Principal

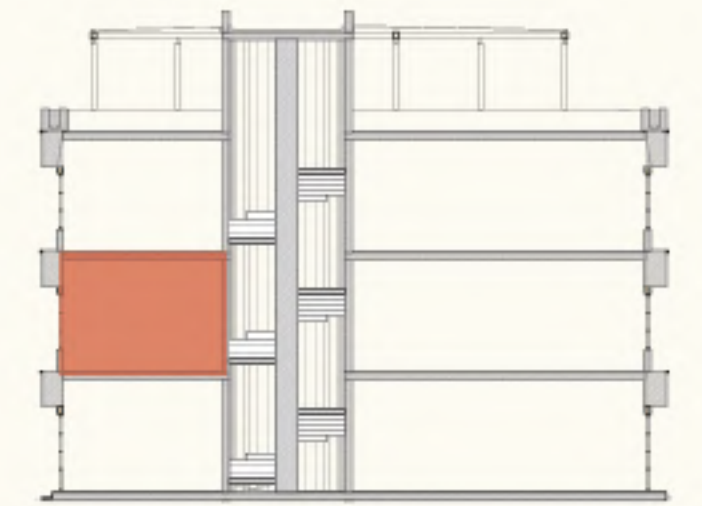


CORTE ESQUÉMÁTICO

No.202 44.5 m²



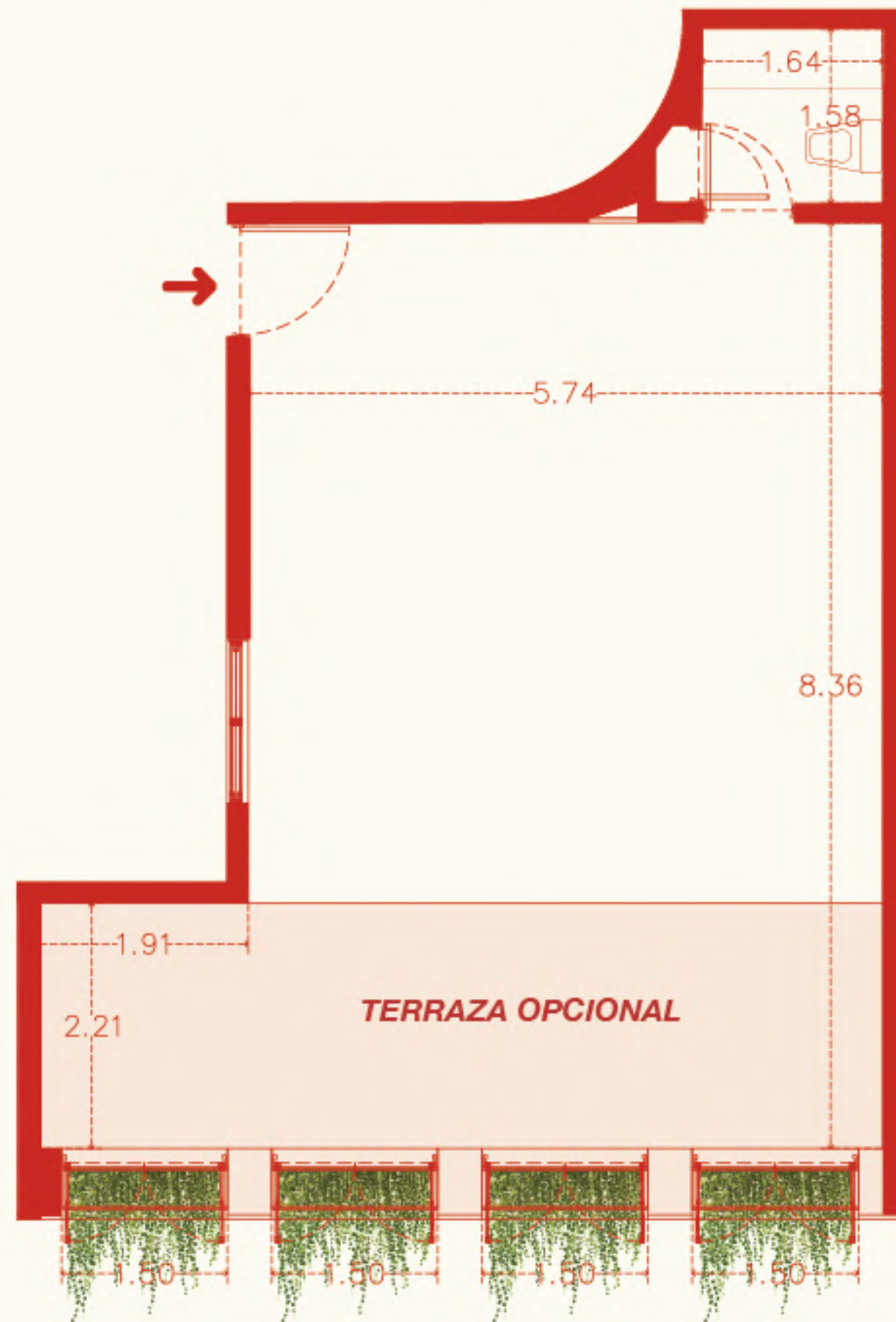
Frente Corredor
peatonal



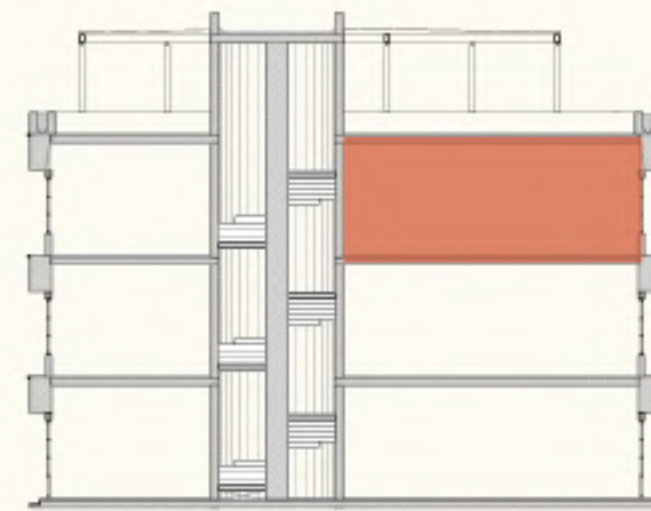
CORTE ESQUÉMÁTICO



No.301 65.4 m²

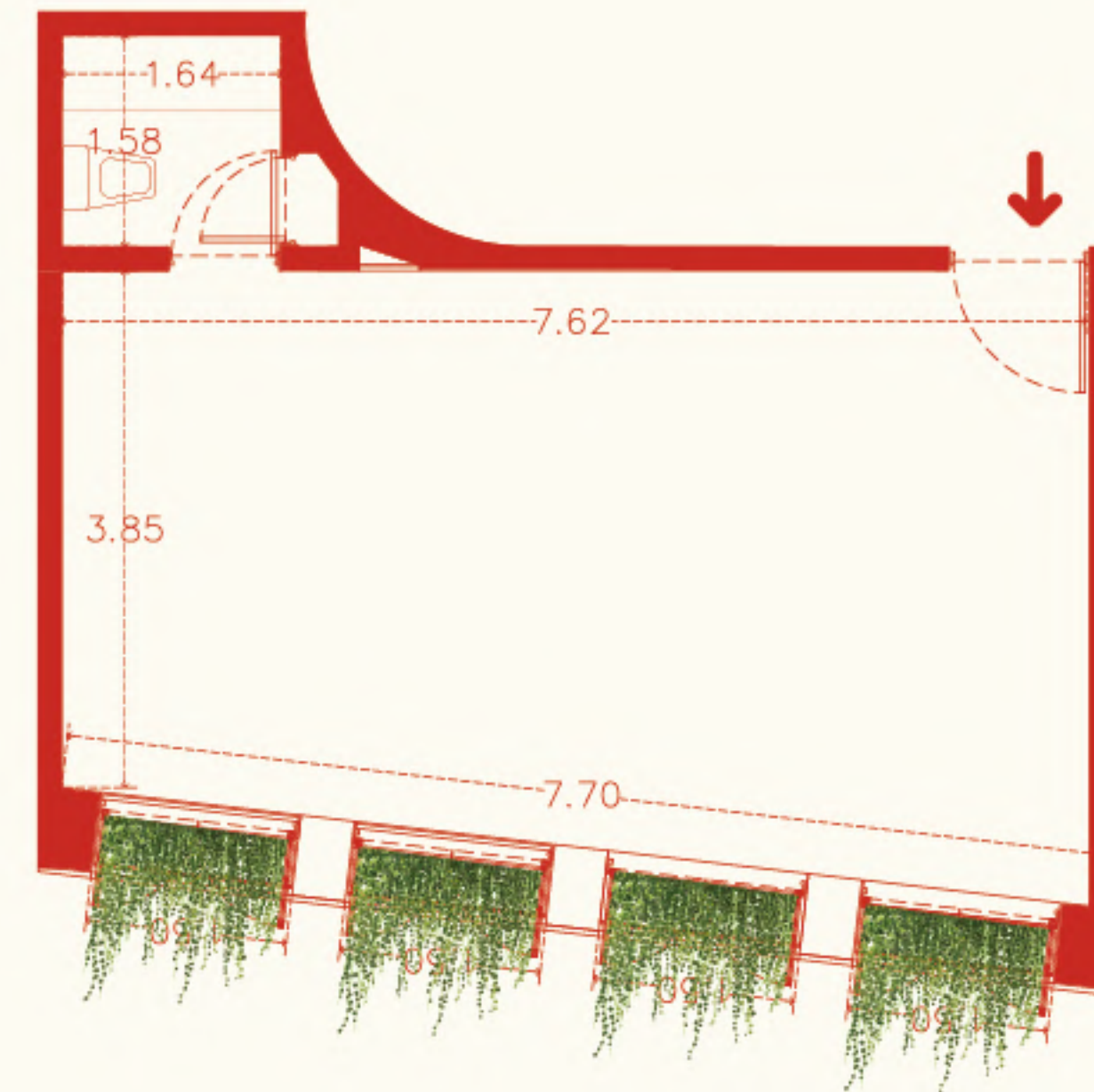


Frente Av. Principal

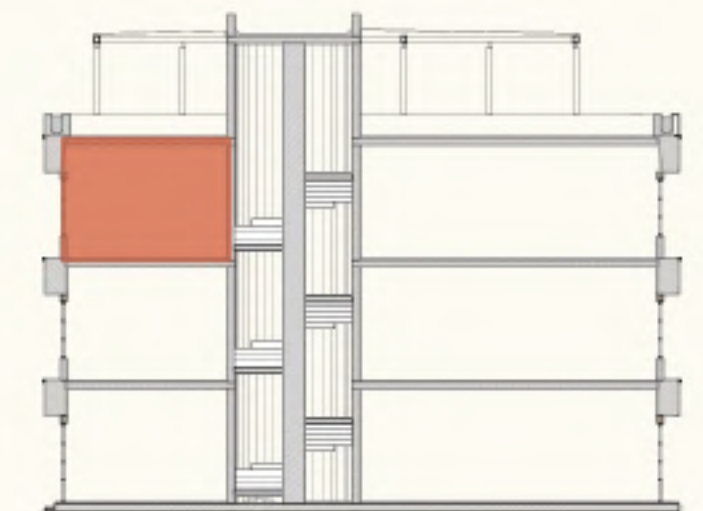


CORTE ESQUÉMÁTICO

No.302 45.5 m²



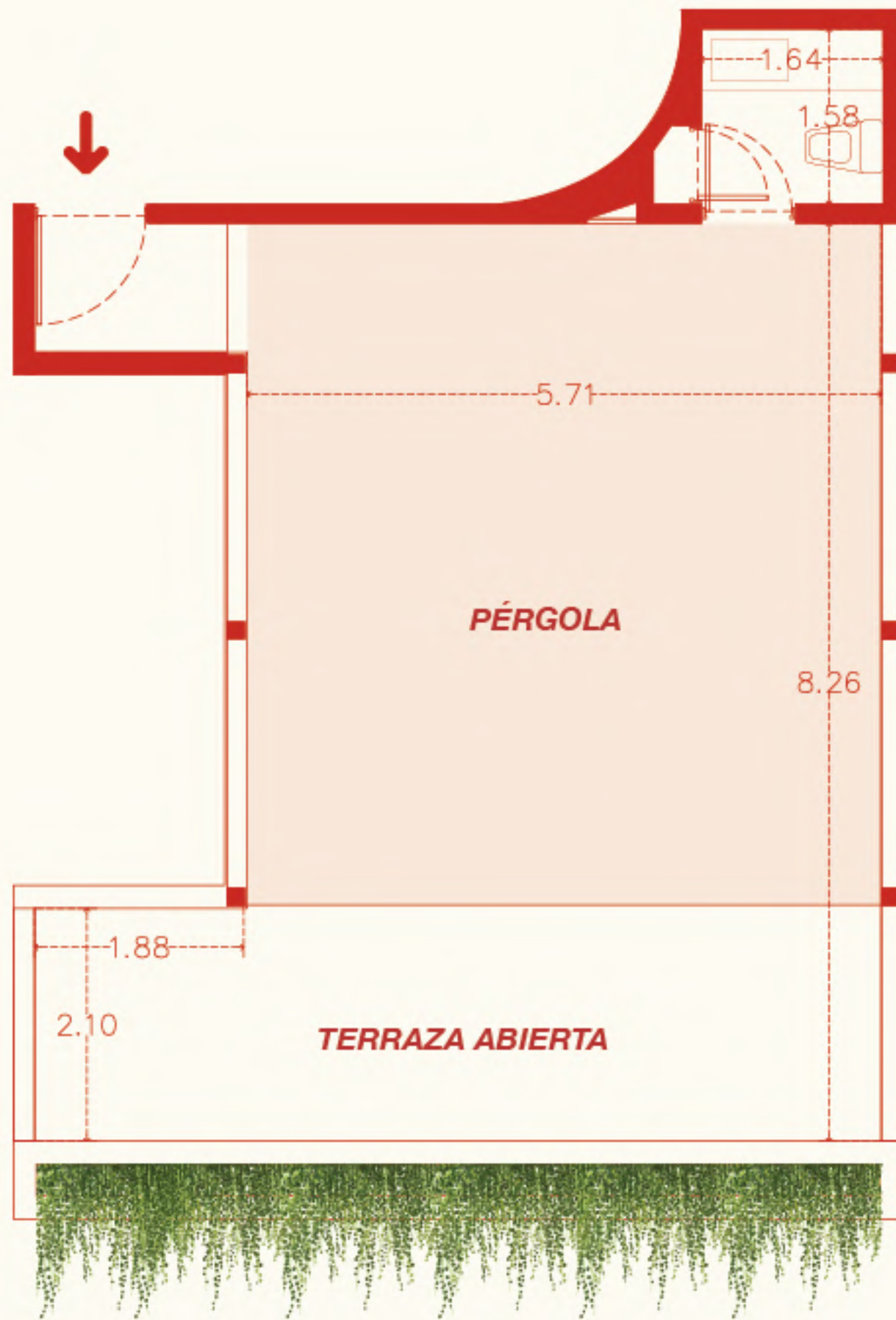
Frente Corredor
peatonal



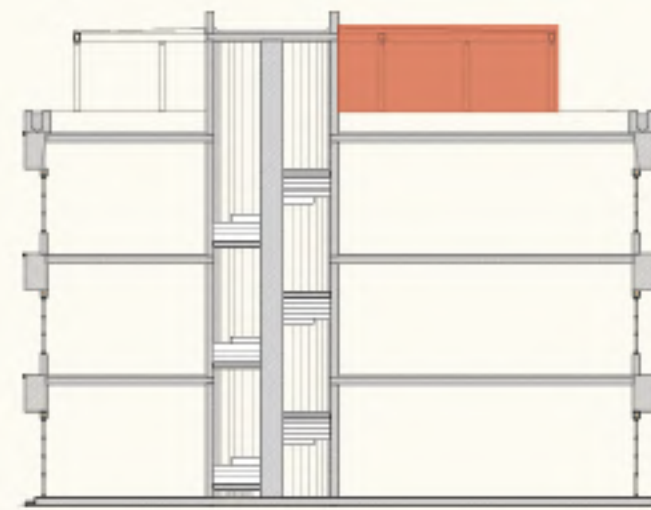
CORTE ESQUÉMÁTICO



No.401 68.4 m²

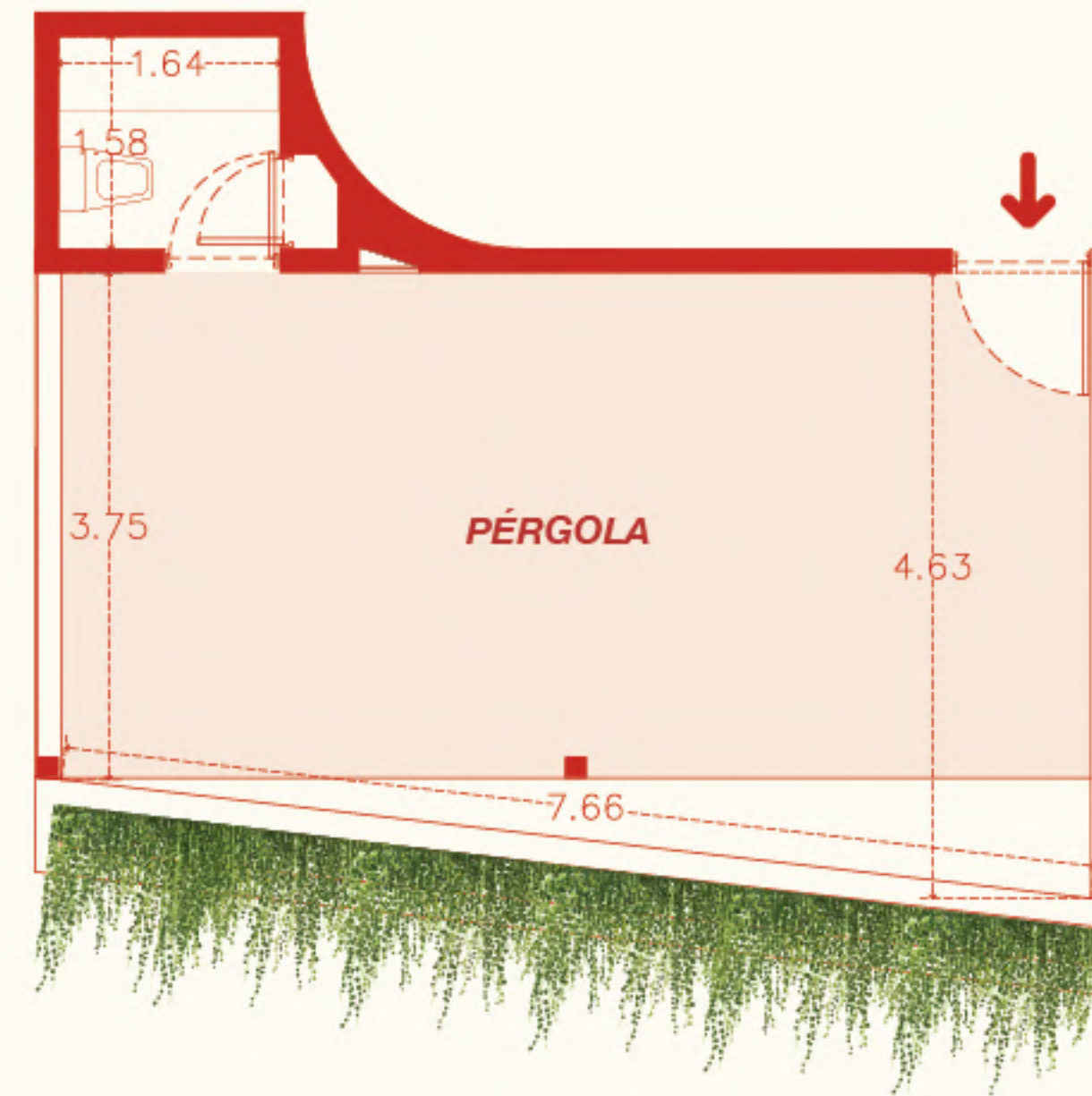


Frente Av. Principal



CORTE ESQUÉMÁTICO

No.402 44.5 m²



Frente Corredor
peatonal



CORTE ESQUÉMÁTICO



ANEMONA

HUACHINANGO
CAPITAL